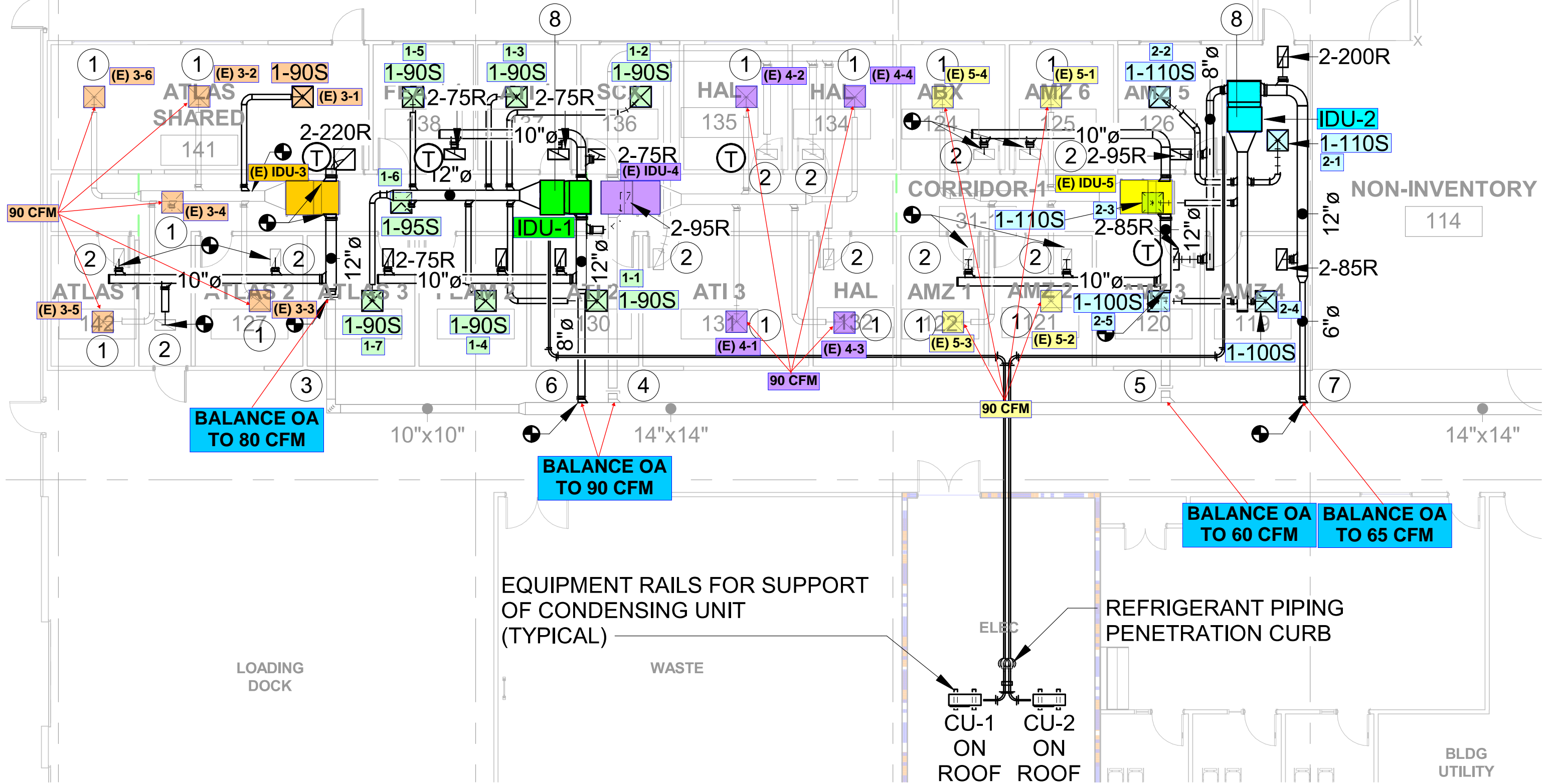


KEYNOTES

- 1 REBALANCE EXISTING SUPPLY AIR DIFFUSER TO 90 CFM
- 2 REBALANCE EXISTING RETURN AIR REGISTER TO 75 CFM
- 3 REBALANCE EXISTING OUTDOOR AIR SUPPLY TO 80 CFM
- 4 REBALANCE EXISTING OUTDOOR AIR SUPPLY TO 90 CFM
- 5 REBALANCE EXISTING OUTDOOR AIR SUPPLY TO 60 CFM
- 6 BALANCE OUTDOOR AIR SUPPLY TO 90 CFM
- 7 BALANCE OUTDOOR AIR SUPPLY TO 65 CFM
- 8 PROVIDE MINIMUM 3/4" AC DRAIN AND ROUTE AS REQUIRED TO CONNECT TO EXISTING AC DRAINS.



BALANCE OA TO 80 CFM

BALANCE OA TO 90 CFM

BALANCE OA TO 60 CFM

BALANCE OA TO 65 CFM

EQUIPMENT RAILS FOR SUPPORT OF CONDENSING UNIT (TYPICAL)

REFRIGERANT PIPING PENETRATION CURB

CU-1 ON ROOF
CU-2 ON ROOF

BLDG UTILITY

KEYNOTES

- 1 REBALANCE EXISTING SUPPLY AIR DIFFUSER TO 90 CFM
- 2 REBALANCE EXISTING RETURN AIR REGISTER TO 75 CFM
- 3 REBALANCE EXISTING OUTDOOR AIR SUPPLY TO 80 CFM
- 4 REBALANCE EXISTING OUTDOOR AIR SUPPLY TO 90 CFM
- 5 REBALANCE EXISTING OUTDOOR AIR SUPPLY TO 60 CFM
- 6 BALANCE OUTDOOR AIR SUPPLY TO 90 CFM
- 7 BALANCE OUTDOOR AIR SUPPLY TO 65 CFM
- 8 PROVIDE MINIMUM 3/4" AC DRAIN AND ROUTE AS REQUIRED TO CONNECT TO EXISTING AC DRAINS.

